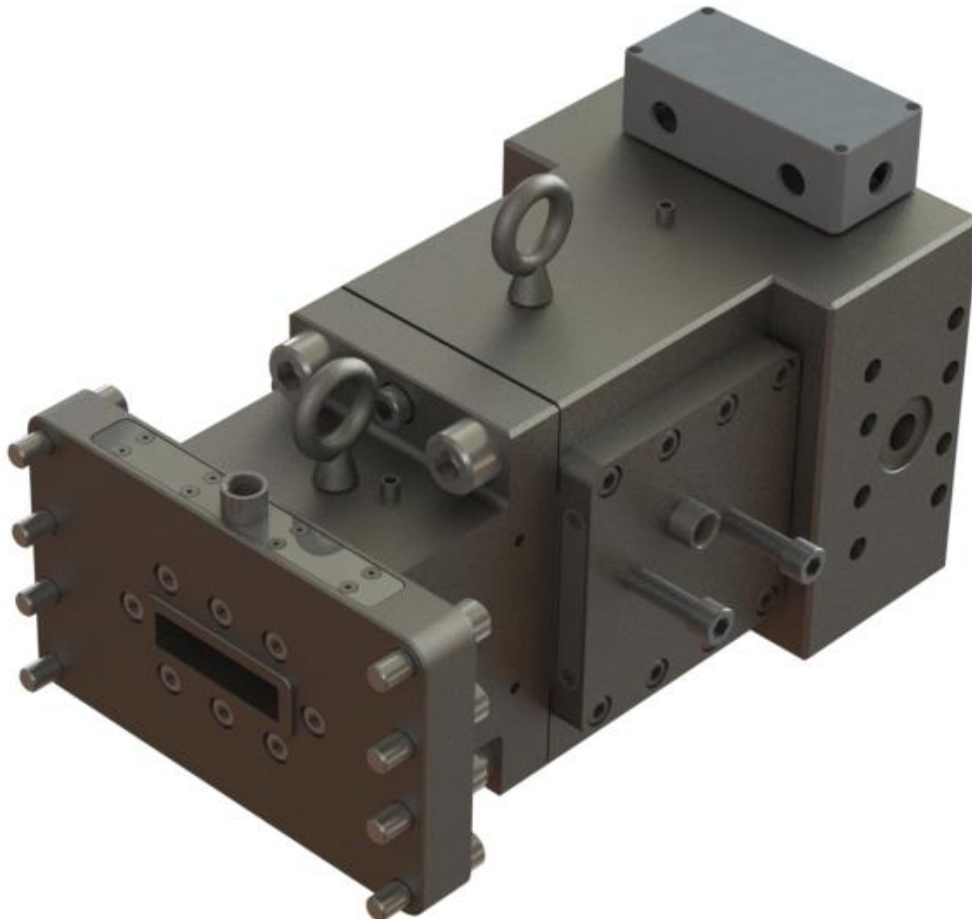




PRECISION FLOW CO-EXTRUSION FEEDBLOCK

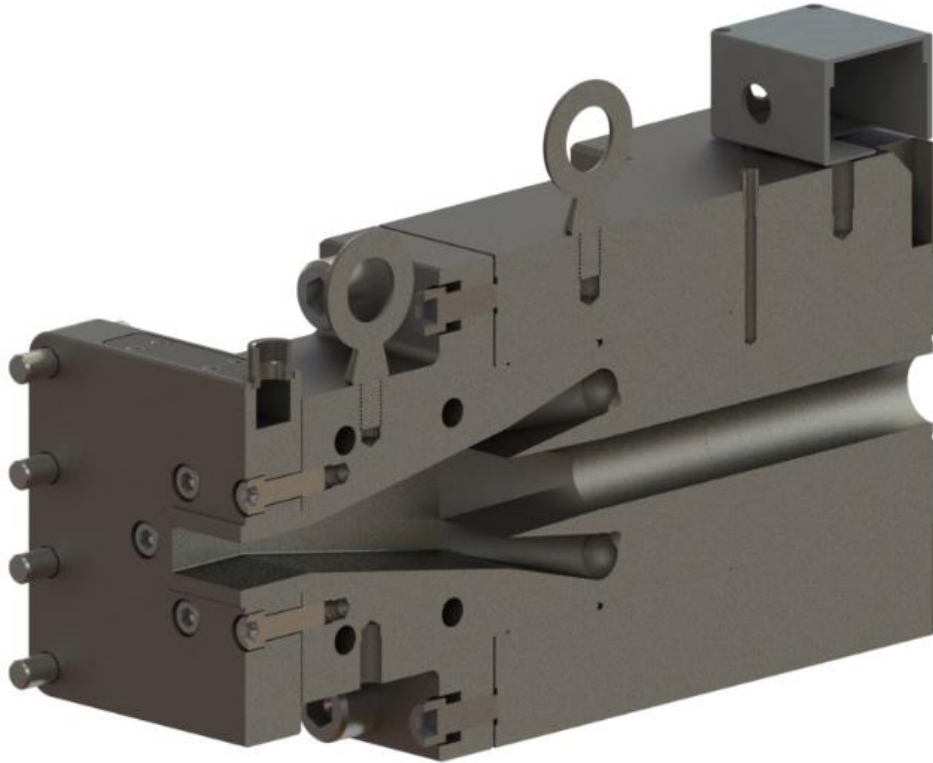
The production of the highest quality multi-layer flat film and sheet has never gotten easier when using this industry leading technology. Decades of design expertise and experience in polymer flow have yielded this product.



PRECISION

DIE SYSTEMS CORP.

MADE IN THE U.S.A.



This cutaway section view reveals the simplicity in design, highly streamlined flow path for all polymer passages. Virtually all polymers can be combined even difficult to process and degradable materials such as rigid PVC and fluoropolymers.

Changes from one polymer to another or one color to another are accomplished much faster than any competitor design as the overall flow passage length and amount of bends has been reduced to the minimum possible.

PRECISION

DIE SYSTEMS CORP.

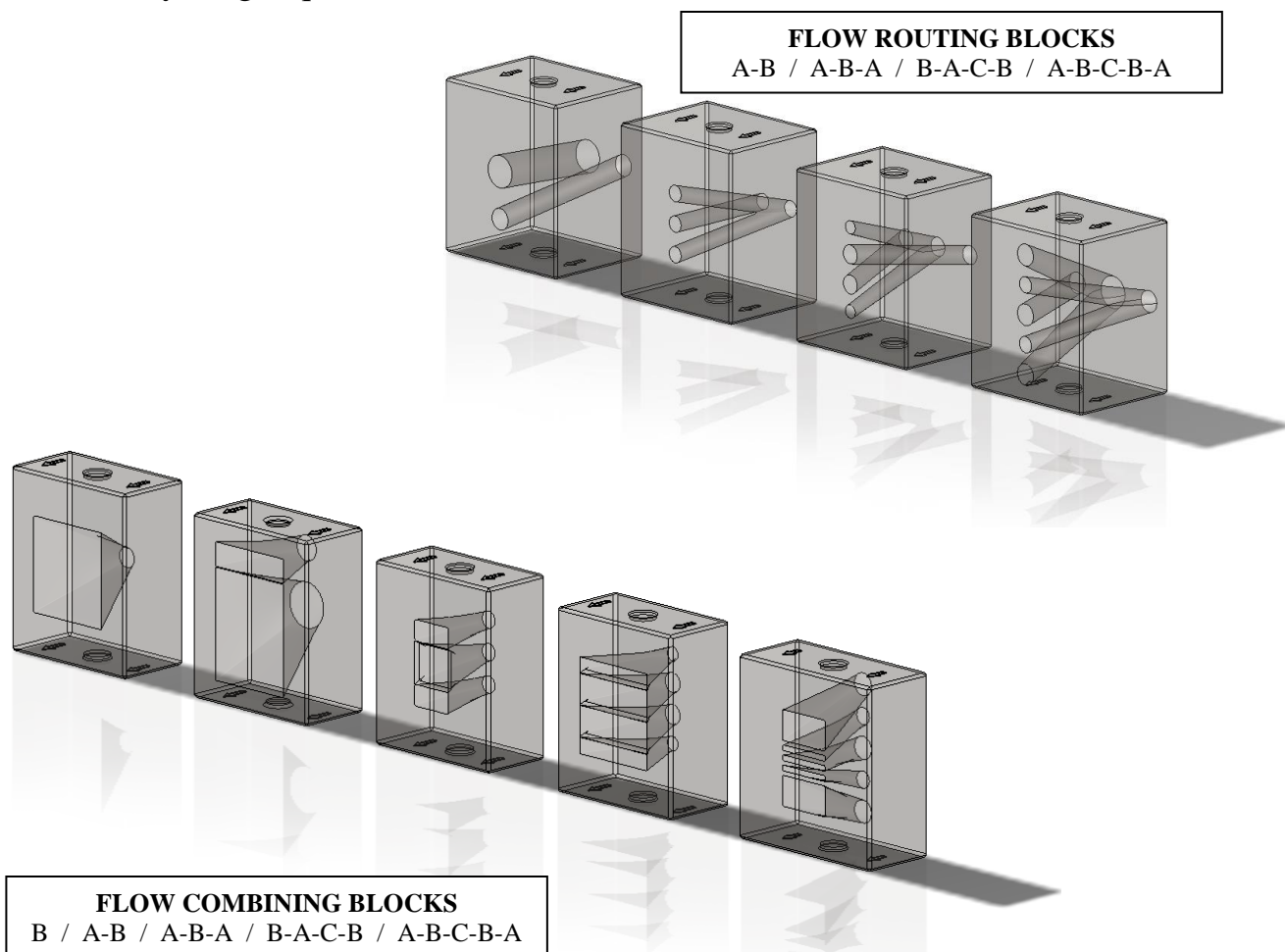
MADE IN THE U.S.A.

The key to the design is the use of easily interchangeable Flow Routing Blocks and Flow Combining Blocks some variations of each shown below.

Flow Routing Blocks utilize round hole flow passages to transfer and/or split flow channels as needed.

Flow Combining Blocks are also completely streamlined in channeling and combining the individual layers.

These blocks can be exchanged in a few minutes as needed to convert from one layering requirement to another.





GENERAL CAPABILITIES AND FEATURES

- From 2 to 5 extruder inlet connections can be accommodated
- Up to 14 layers can be created in an almost unlimited arrangement
- The exit channel can be any width up to 4" (101.6mm) to match any die entrance configuration
- Specific, customized designs are available for both horizontal or vertical die operating positions
- A wide variety of inlet connection layouts are available to match extruder locations
- The inlet body can be single piece or split body design for fully streamlined flow and cleaning of the flow channel
- The Flow Combining Block outlet can be profiled for partial coverage, or for compensating for non-linear flow in the die to achieve a uniform layer thickness across the width
- Nickel plated tool steel, 420 stainless steel, 15-5 PH stainless steel or special alloys as needed can be used for materials of construction
- Flow surfaces are highly polished for streamlined flow
- English or metric fasteners can be incorporated
- Complete electrical wiring with multiple plugs or gang wired receptacles to match any voltage required into the standard three heat only zones
- Insulation jackets can be supplied if desired
- Special hard and reduced friction coatings can be incorporated to aid in cleaning